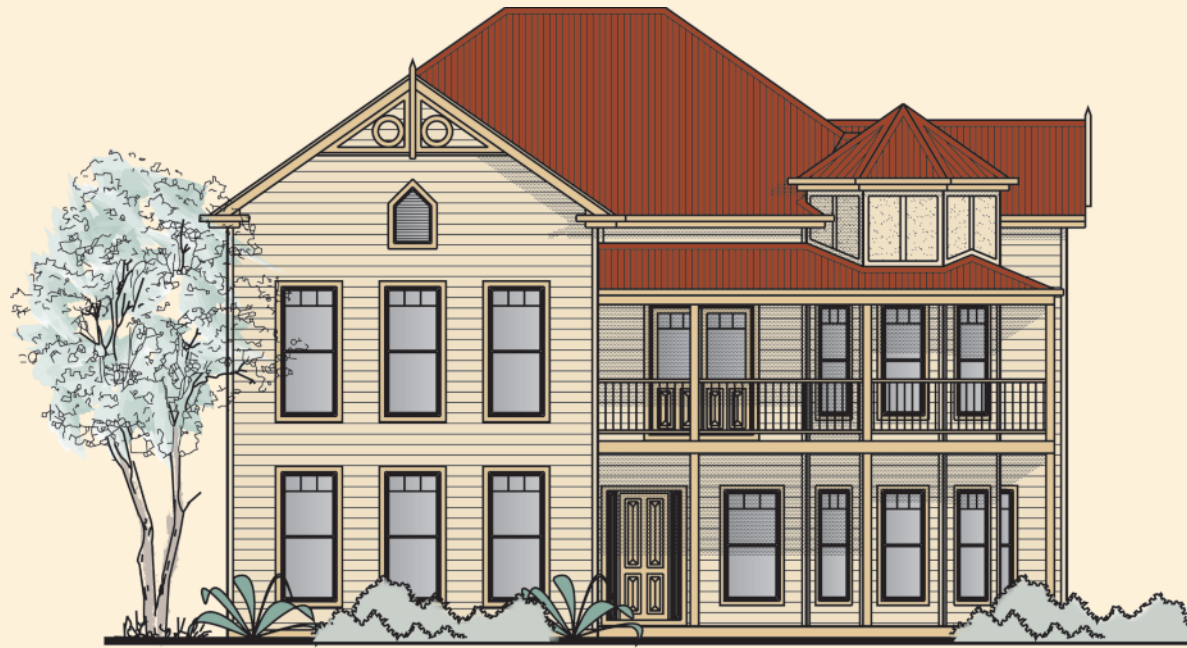




# Addcover Homes

*Bringing Dreams to Life!*



## *Lillydale Two Storey*

“This distinguished lifestyle choice is nothing short of remarkable. With its stunning array of features and award winning style, this sensational design is an impressive statement of luxury, quality and attention to detail that will leave you inspired.”

# Lillydale Two Storey Floorplan

## Home Inclusions

### No extra cost

- ✓ Council building application fees
- ✓ Construction and warranty insurance
- ✓ BASIX assessment
- ✓ Engineers fees for slab/footings
- ✓ Geotechnical soil report
- ✓ Contour survey and house pegout
- ✓ 90 day defect rectification period
- ✓ Colourbond iron roof
- ✓ 2.75m (9') ceilings
- ✓ 1.8 wide verandah's as illustrated
- ✓ 35° roof pitch
- ✓ Brick or weatherboard exterior

## Total Areas

**Two Storey**

**318sqm**

