



# Addcover Homes

*Bringing Dreams to Life!*



## *Leura Classic*

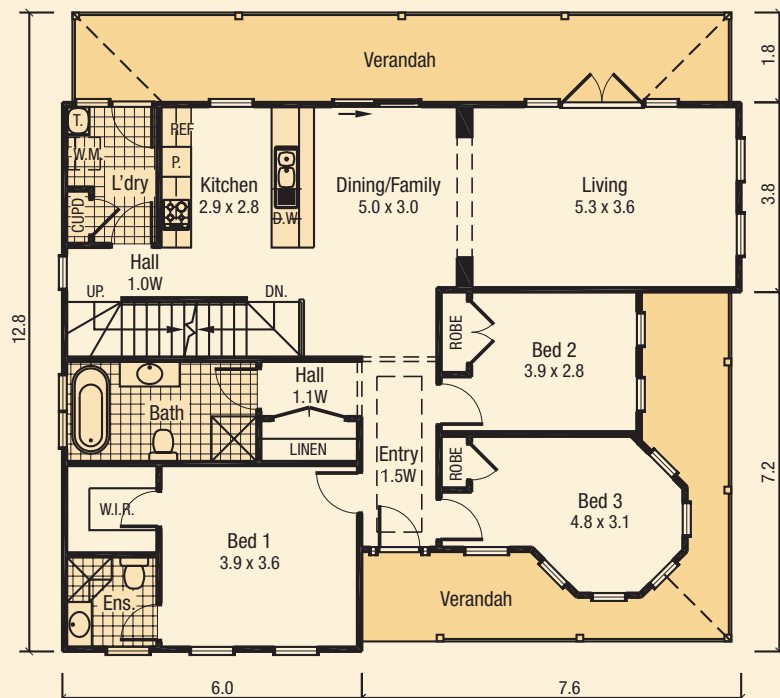
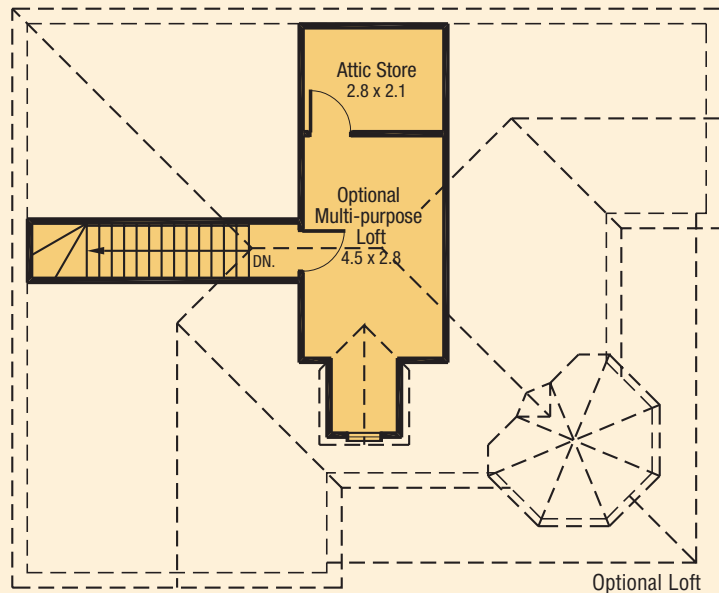
“A breathtaking facade creates a feeling of grandeur from the very moment you set eyes on this magnificent home. The Leura boasts exceptional style and modern functionality. Available as a three bedroom loft or four bedroom with optional garage and rumpus, this design has it all...wow.”

# Leura Classic Floorplan

## Home Inclusions

### No extra cost

- ✓ Council building application fees
- ✓ Construction and warranty insurance
- ✓ BASIX assessment
- ✓ Engineers fees for slab/footings
- ✓ Geotechnical soil report
- ✓ Contour survey and house pegout
- ✓ 90 day defect rectification period
- ✓ Colourbond iron roof
- ✓ 2.75m (9') ceilings
- ✓ 1.8 wide verandah's as illustrated
- ✓ 35° roof pitch
- ✓ Brick or weatherboard exterior



## Total Areas

**Classic 171 sqm**

**Loft (optional) 23 sqm**